

ABOUT EVAC ENEMA

Evac Enema liquid is an anorectal preparation which helps in easy passage of stools and is indicated for constipation. Evac Enema is safe and easy as it makes use of R.O. water which eliminates the potential threat of soap water colitis.

It contains glycerin 15% w/v and sodium chloride 15% w/v. Glycerin acts as a hyperosmotic laxative due to which it draws water into the intestine

promoting contractions. Sodium chloride exerts hyperosmotic pressure which increases fluid content in the rectum, stimulates contraction and initiates defecation.

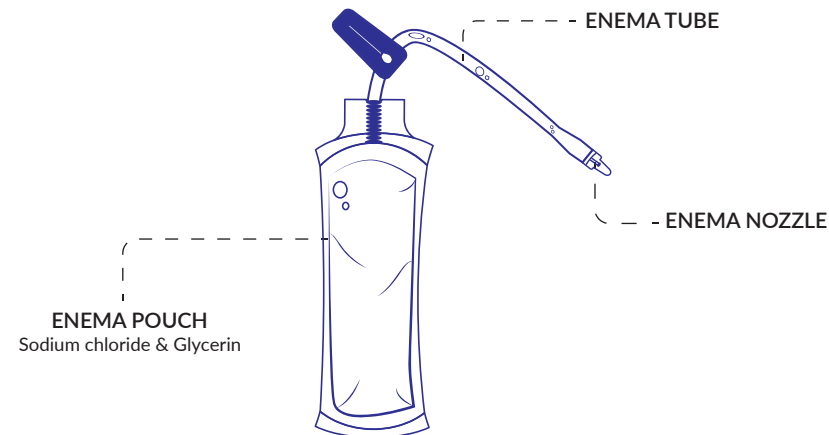
For administering the dose properly, the Evac Enema Pouch comes with a soft nozzle with sufficient length which facilitates easy introduction of drugs into the rectum.

DESCRIPTION

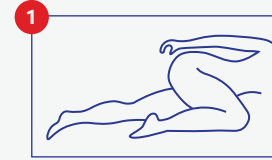
Evac Enema helps in rectal evacuation prior to surgery in a hospital setting. It is also designed to be used at home for cardiovascular patients and patients with hernia to avoid excessive straining during defecation. Evac Enema aids not only in easy defecation but also forms protective film and moisturises the dry area.

COMPOSITION

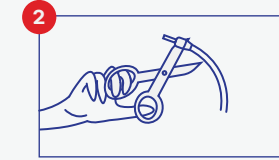
Sodium chloride I.P	15% w/v
Glycerin I.P	15% w/v
Purified Water	q.s



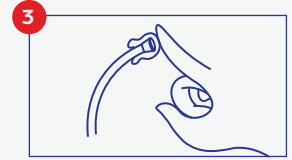
DIRECTIONS OF USE



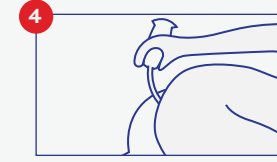
Lie in a left lateral position with the legs flexed at the knee and hip joints



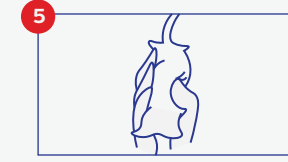
Remove cap and cut the rod on the nozzle



Lubricate the nozzle tube with a small quantity of enema solution



Now insert the lubricated nozzle tube into the anus



Squeeze the container till nearly all the solution is emptied

BENEFITS

Evac Enema can -

- ▶ Clear out your bowel
- ▶ Treat chronic constipation
- ▶ Keep you safe from soap water colitis

EFFECTS

- ▶ Inserting an enema solution into your rectum and filling your colon with fluid might make you feel "heavy" in your abdomen and lower gastrointestinal (GI) tract. It is only the result of the influx of fluid. So, although a little uncomfortable, they are generally safe.
- ▶ Don't worry if you experience mild muscle contractions or spasms since this is a sign of enema working and instructing the muscles of your GI tract to push the stool out of your body.

DISPOSE

- ▶ Once the solution is inserted into the anus and emptied, remove the nozzle tube and dispose of the container.
- ▶ Do not flush this medication down the toilet and keep out of sight and reach of pets and children. Wash your hands before and after use.



**BANGALORE ANTIBIOTICS
& BIOLOGICALS PVT.LTD**

Head Office

5/235, B Sarovaram Road,
Eranhipalam, Calicut 673020
Kerala, India

Factory

78/2, 78/3, Peramanur East Street,
Mayor Nagar, Salem 636007
Tamil Nadu, India

+91 9447170894, +91 7736781397

bablct1@gmail.com www.bangaloreantibiotics.com



R.O Water



**No Threat of
Soap Water Colitis**



EVAC[®] ENEMA

SODIUM CHLORIDE & GLYCERIN ENEMA

The Better Choice.